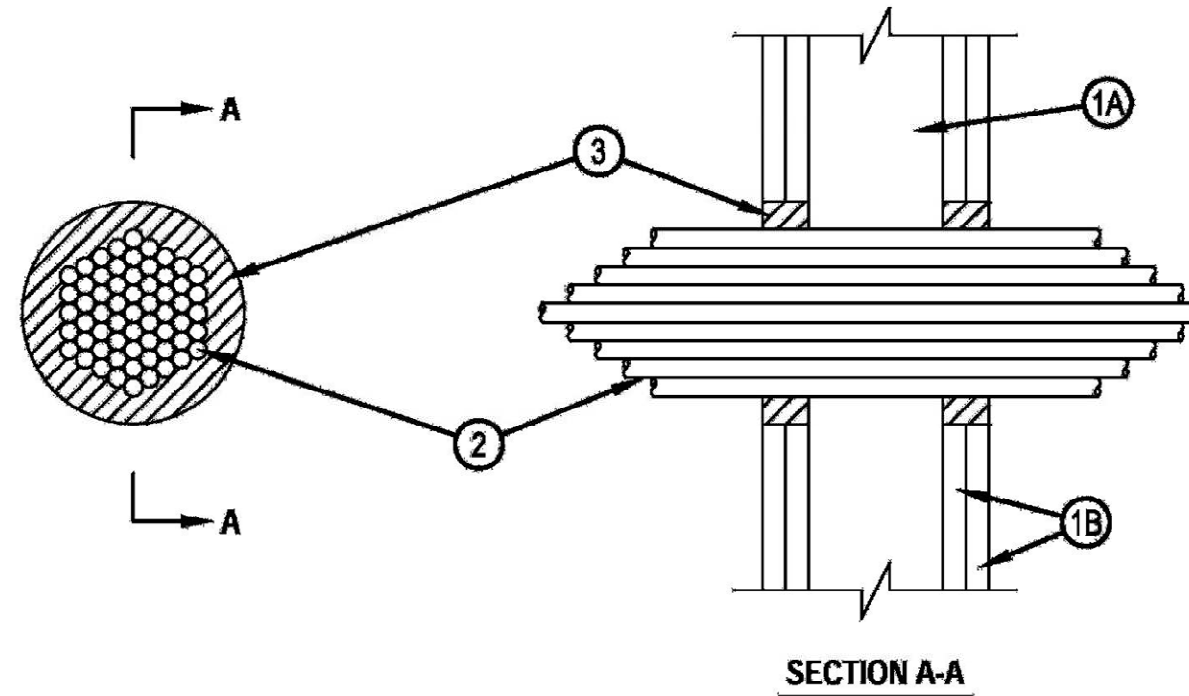


System No. W-L-3047

F Rating — 2 Hr
T Rating — 3/4 Hr

WL 3047



1. Wall Assembly — The fire-rated gypsum wallboard/stud wall assembly shall be constructed of the materials and in the manner specified in the individual U300 or U400 Series Wall and Partition Designs in the UL Fire Resistance Directory and shall include the following construction features:
 - A. Studs — Wall framing may consist of either wood studs or steel channel studs. Wood studs to consist of nom 2 by 4 in. lumber spaced 16 in. OC. Steel studs to be min 2-1/2 in. wide and spaced max 24 in. OC.
 - B. Gypsum Board* — Two layers of 5/8 in. thick gypsum wallboard, as specified in the individual Wall and Partition Design. Max diam of opening is 6 in.
2. Cables — Max 7/C No. 12 AWG cables with polyvinyl chloride jacket and insulation. Aggregate cross-sectional area of tightly bundled cable group to be 33 percent of the aggregate cross-sectional area of the opening. Cables to be rigidly supported on both sides of wall assembly.
3. Fill, Void or Cavity Material* — Sealant — Min 1-1/4 in. thickness of fill material applied within the annulus, flush with both surfaces of wall. Sealant to be forced into interstices of cable group to max extent possible.
HILTI CONSTRUCTION CHEMICALS, DIV OF
HILTI INC — FS-One Sealant
*Bearing the UL Classification Mark



Reproduced by HILTI, Inc. Courtesy of
Underwriters Laboratories, Inc.
January 09, 2003

