

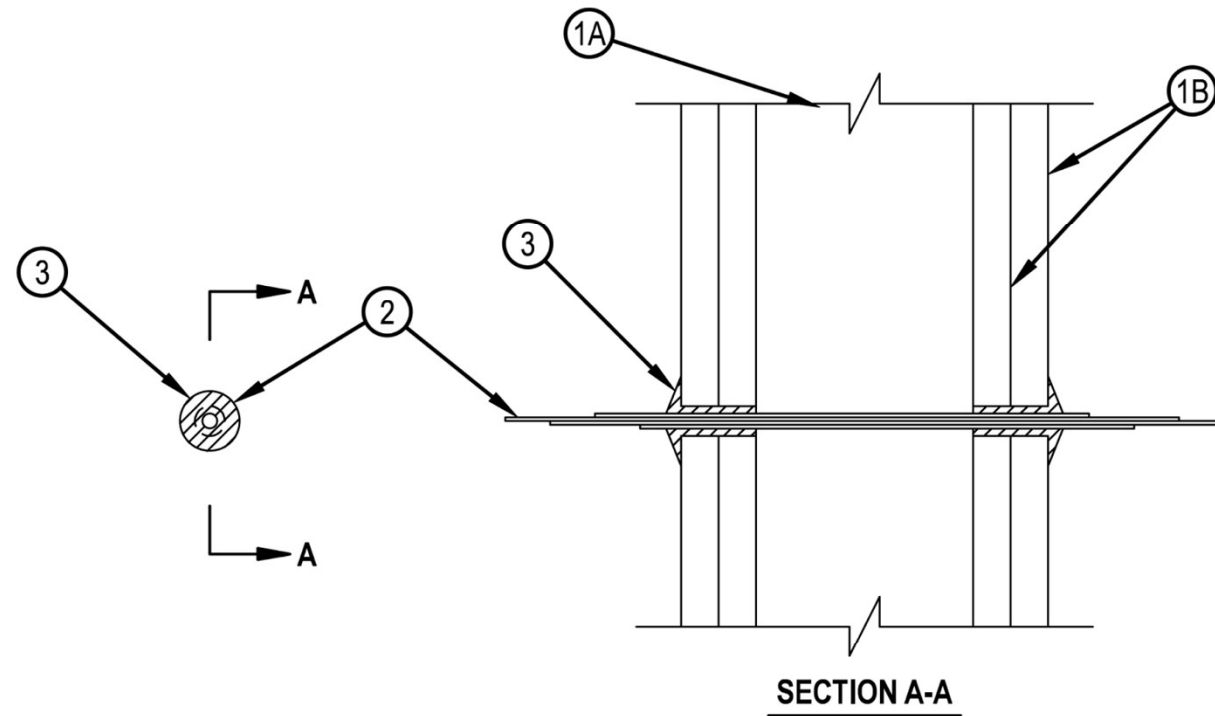


# System No. W-L-3058

WL 3058

Classified by Underwriters Laboratories, Inc. to UL 1479 and CAN/ULC-S115

ANSI/UL1479 (ASTM E814)	CAN/ULC S115
F Rating — 2 Hr	F Rating — 2 Hr
T Rating — 1-1/2 Hr	FT Rating — 1-1/2 Hr
L Rating At Ambient - Less Than 1 CFM/sq ft	FH Rating — 2 Hr
L Rating At 400 F - 4 CFM/sq ft	FTH Rating — 1-1/2 Hr
	L Rating At Ambient - Less Than 1 CFM/sq ft
	L Rating At 400 F - 4 CFM/sq ft



1. Wall Assembly — The fire-rated gypsum wallboard/stud wall assembly shall be constructed of the materials and in the manner specified in the individual U300, U400, V400 or W400 Series Wall and Partition Designs in the UL Fire Resistance Directory and shall include the following construction features:

- A. Studs — Wall framing may consist of either wood studs or steel channel studs. Wood studs to consist of nom 2 by 4 in. (51 by 102 mm) lumber spaced 16 in. (406 mm) OC. Steel studs to be min 2-1/2 in. (64 mm) wide and spaced max 24 in. (610 mm) OC.
- B. Gypsum Board\* — Two layers of nom 5/8 in. (16 mm) thick gypsum wallboard, as specified in the individual Wall and Partition Design. Max diam of opening is 1/2 in. (13 mm).

2. Cables — Max 25 pair No. 24 AWG telephone cable; polyvinyl insulation and jacket materials. One cable to be centered within the firestop system. Cable to be rigidly supported on both sides of wall assembly.

3. Fill, Void or Cavity Material\* — Sealant — Fill material forced into annular space to max extent possible. Additional fill material to be installed such that a min 1/4 in. (6 mm) crown is formed around the penetrating item.

HILTI CONSTRUCTION CHEMICALS, DIV OF HILTI INC — FS-One Sealant or FS-ONE MAX Intumescent Sealant

\* Indicates such products shall bear the UL or cUL Certification Mark for jurisdictions employing the UL or cUL Certification (such as Canada), respectively.



Reproduced by HILTI, Inc. Courtesy of Underwriters Laboratories, Inc. January 26, 2015