

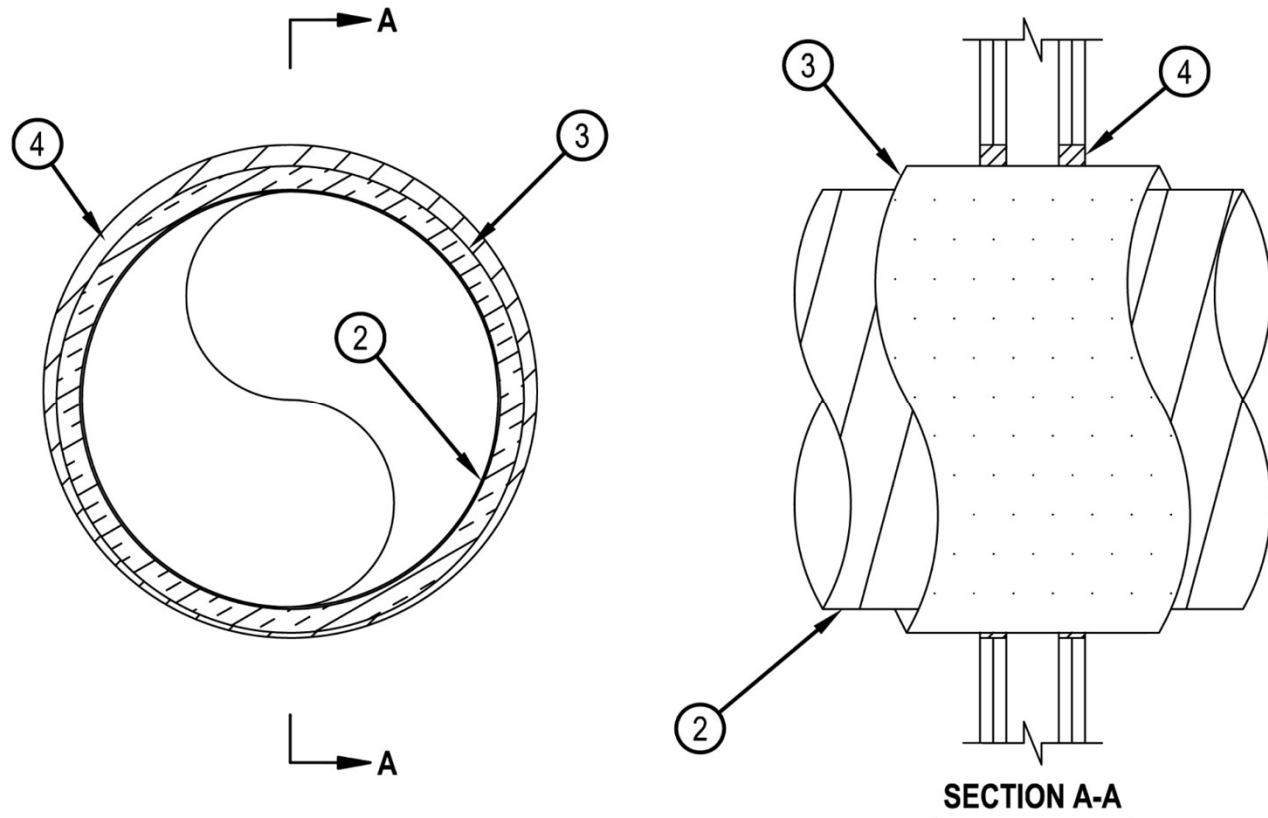


# System No. W-L-7153

WL 7153

Classified by Underwriters Laboratories, Inc. to UL 1479 and CAN/ULC-S115

ANSI/UL1479 (ASTM E814)	CAN/ULC S115
F Ratings - 1 and 2 Hr (See Item 1)	F Ratings - 1 and 2 Hr (See Item 1)
T Rating - 1/2 Hr	FT Rating - 1/2 Hr
	FH Ratings - 1 and 2 Hr (See Item 1)
	FTH Rating - 1/2 Hr



1. Wall Assembly — The 1 or 2 hr fire-rated gypsum wallboard/stud wall assembly shall be constructed of the materials and in the manner described in the individual U400, V400 or W400 Series Wall or Partition Design in the UL Fire Resistance Directory and shall include the following construction features:

- A. Studs — Wall framing shall consist of channel studs. Steel studs to be min 2-1/2 in. (64 mm) wide and spaced max 24 in. (610 mm) OC.
- B. Wallboard, Gypsum\* — 5/8 in. (16 mm) thick, 4 ft (122 cm) wide with square or tapered edges. The gypsum board type, thickness, number of layers, fastener type and sheet orientation shall be as specified in the individual Wall and Partition Design in the UL Fire Resistance Directory. Max diam of opening is 23-1/2 in. (597 mm).

The hourly F and FH Ratings of the firestop system are equal to the hourly fire rating of the wall assembly in which it is installed.



Hilti Firestop Systems

Reproduced by HILTI, Inc. Courtesy of Underwriters Laboratories, Inc. January 27, 2015

# System No. W-L-7153

WL 7153

2. Steel Duct — Galv steel duct to be installed concentrically or eccentrically within the firestop system. Duct to be rigidly supported on both sides of wall assembly.

A. Spiral Wound HVAC Duct — Nom 20 in. (508 mm) diam (or smaller) No. 24 MSG (or heavier) galv steel spiral wound duct.

B. Sheet Metal Duct — Nom 12 in. (305 mm) diam (or smaller) No. 28 MSG (or heavier) galv sheet steel duct.

3. Duct Insulation\* — Nom 1-1/2 in. (38 mm) thick glass fiber batt or blanket (min 3/4 pcf or 56 kg/m<sup>3</sup>) jacketed on the outside with a foil-scrim-kraft facing. Longitudinal and transverse joints sealed with aluminum foil tape. During the installation of the fill material, the batt or blanket shall be compressed 50% such that the annular space within the firestop system shall be min 1/4 in. (6 mm) to max 1 in. (25 mm). See Batts and Blankets - (BKNV) category in the Building Materials Directory for names of manufacturers. Any batt or blanket meeting the above specifications and bearing the UL Classification Marking with a Flame Spread Index of 25 or less and a Smoke Developed Index 50 or less may be used.

4. Fill, Void or Cavity Material\* — Sealant — Min 5/8 in. (16 mm) or 1-1/4 in. (32 mm) thickness of fill material applied within annulus, flush with both surfaces of wall for 1 or 2 hr walls, respectively. If voids develop after the fill materials cures, the voids shall be sealed with additional fill material.

HILTI CONSTRUCTION CHEMICALS, DIV OF HILTI INC — FS-ONE Sealant or FS-ONE MAX Intumescent Sealant

\* Indicates such products shall bear the UL or cUL Certification Mark for jurisdictions employing the UL or cUL Certification (such as Canada), respectively.



Hilti Firestop Systems

Reproduced by HILTI, Inc. Courtesy of Underwriters Laboratories, Inc. January 27, 2015