

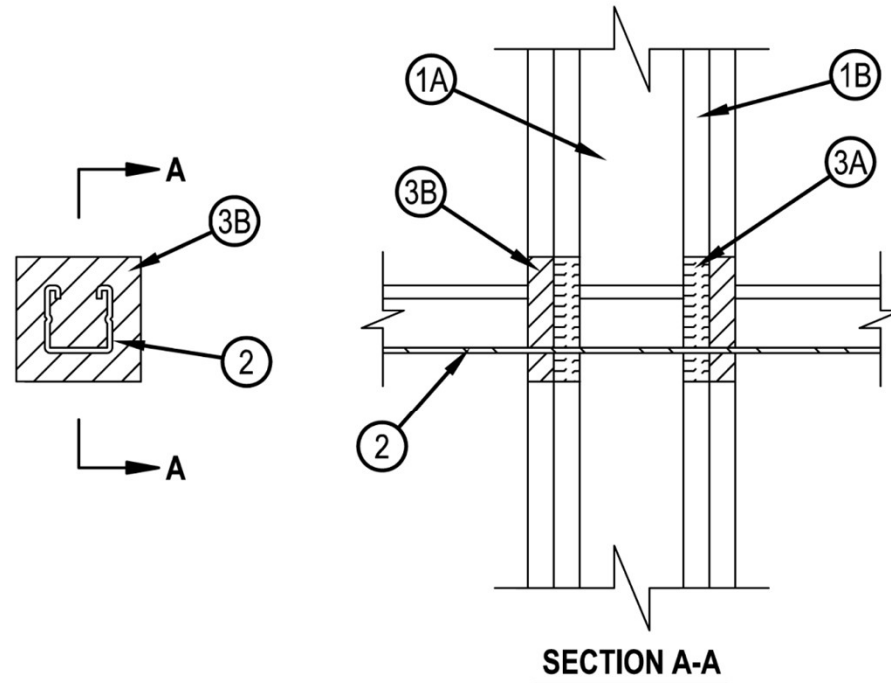


Classified by  
Underwriters Laboratories, Inc.  
to UL 1479 and CAN/ULC-S115

## System No. W-L-7130

WL 7130

| ANSI/UL1479 (ASTM E814)             | CAN/ULC S115                         |
|-------------------------------------|--------------------------------------|
| F Ratings - 1 and 2 Hr (See Item 1) | F Ratings - 1 and 2 Hr (See Item 1)  |
| T Rating - 0 Hr                     | FT Rating - 0 Hr                     |
|                                     | FH Ratings - 1 and 2 Hr (See Item 1) |
|                                     | FTH Rating - 0 Hr                    |



1. Wall Assembly — The 1 or 2 hr fire-rated gypsum board/stud wall assembly shall be constructed of the materials and in the manner specified in the individual U300, U400, V400 or W400 Series Wall and Partition Designs in the UL Fire Resistance Directory and shall include the following construction features:

- A. Studs — Wall framing may consist of either wood studs or steel channel studs. Wood studs to consist of nom 2 by 4 in. (51 by 102 mm) lumber spaced max 16 in. (406 mm) OC. Steel studs to be min 2-1/2 in. (64 mm) wide and spaced max 24 in. (610 mm) OC.
- B. Gypsum Board\* — One or two layers of gypsum board, as specified in the individual Wall and Partition Design. Max area of rectangular opening is 15 sq in. (96 cm<sup>2</sup>) with max dimension of 5 in. (127 mm). In lieu of rectangular opening max diam of circular opening is 3 in. (76 mm).

The F and FH Ratings of the firestop system are equal to the hourly fire rating of the wall assembly.

2. Through Penetrants — One metallic strut, cable, rod or angle service support to be installed within the firestop system. An annular space of min 1/8 in. (3 mm) to max 7/8 in. (22 mm) is required within the firestop system. Strut, cable, rod or angle service support to be rigidly supported on both sides of floor or wall assembly. The strut, cable, rod or angle service support may be installed at an angle not greater than 45 degrees from the perpendicular. The following types and sizes of metallic strut, cable, rod or angle service support may be used:

- A. Steel Strut — Max 1-5/8 by 1-5/8 in. (41 by 41 mm) channel strut formed from min 0.105 in. (2.7 mm) thick galv or painted steel.
- B. Steel Strut — Max 3-1/4 by 1-5/8 in. (83 by 41 mm) H strut formed from min 0.105 in. (2.7 mm) thick galv or painted steel.
- C. Cable — Max 3/8 in. (9.5 mm) diam unjacketed galv steel cable.
- D. Threaded Rod — Max 1 in. (25 mm) diam galv steel threaded rod.
- E. Steel Angle — 2 by 2 by 1/8 in. (51 by 51 by 3 mm) thick steel angle.



Hilti Firestop Systems

Reproduced by HILTI, Inc. Courtesy of  
Underwriters Laboratories, Inc.  
January 27, 2015

Page: 1 of 2

## System No. W-L-7130

WL 7130

3. Firestop System — The firestop system shall consist of the following:

- A. Packing Material — Min 1/2 in. (13 mm) thickness of min 4 pcf (64 kg/m<sup>3</sup>) mineral wool batt insulation firmly packed into opening as a permanent form. Packing material to be located between penetrant and periphery of opening, and within channels of struts. Packing material to be recessed from both surfaces of wall to accommodate the required thickness of fill material. When through penetrant is oriented perpendicular to wall or when Type FS-ONE Sealant (Item 3B) is used, packing material is optional.
- B. Fill, Void or Cavity Material\* - Sealant — Min 5/8 in. (16 mm) thickness of fill material applied within the annulus and within the channel struts, flush with both surfaces of wall.

HILTI CONSTRUCTION CHEMICALS, DIV OF HILTI INC — FS-ONE Sealant, CP 606 Sealant or FS-ONE MAX Intumescent Sealant

\* Indicates such products shall bear the UL or cUL Certification Mark for jurisdictions employing the UL or cUL Certification (such as Canada), respectively.



Hilti Firestop Systems

Reproduced by HILTI, Inc. Courtesy of  
Underwriters Laboratories, Inc.  
January 27, 2015

Page: 2 of 2